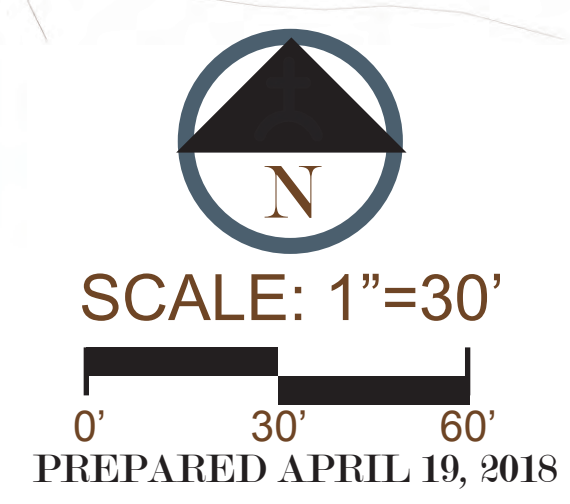


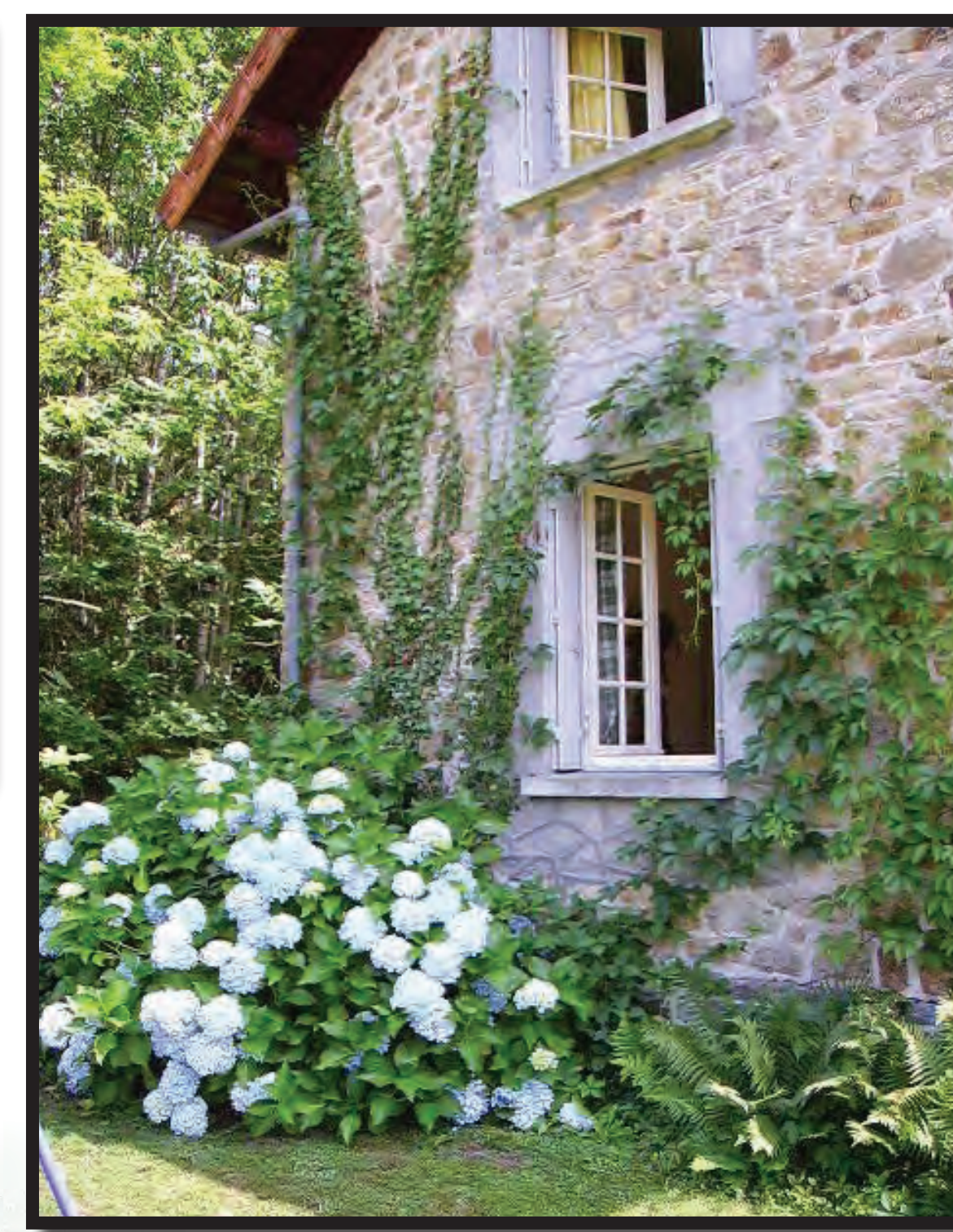


**VALLEY BARN SITE PLAN**  
*Mountain Village*  
 at TEJON RANCH

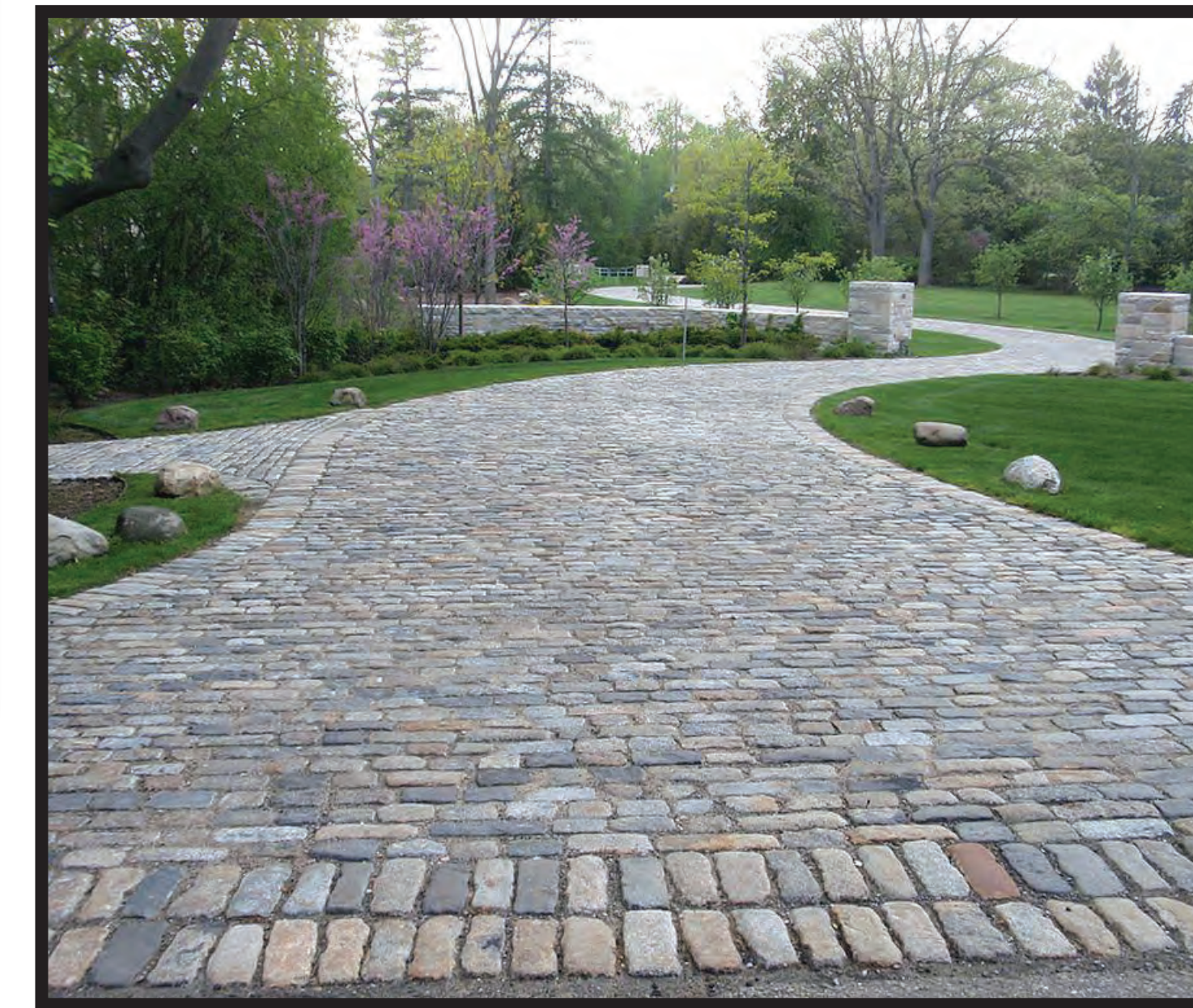
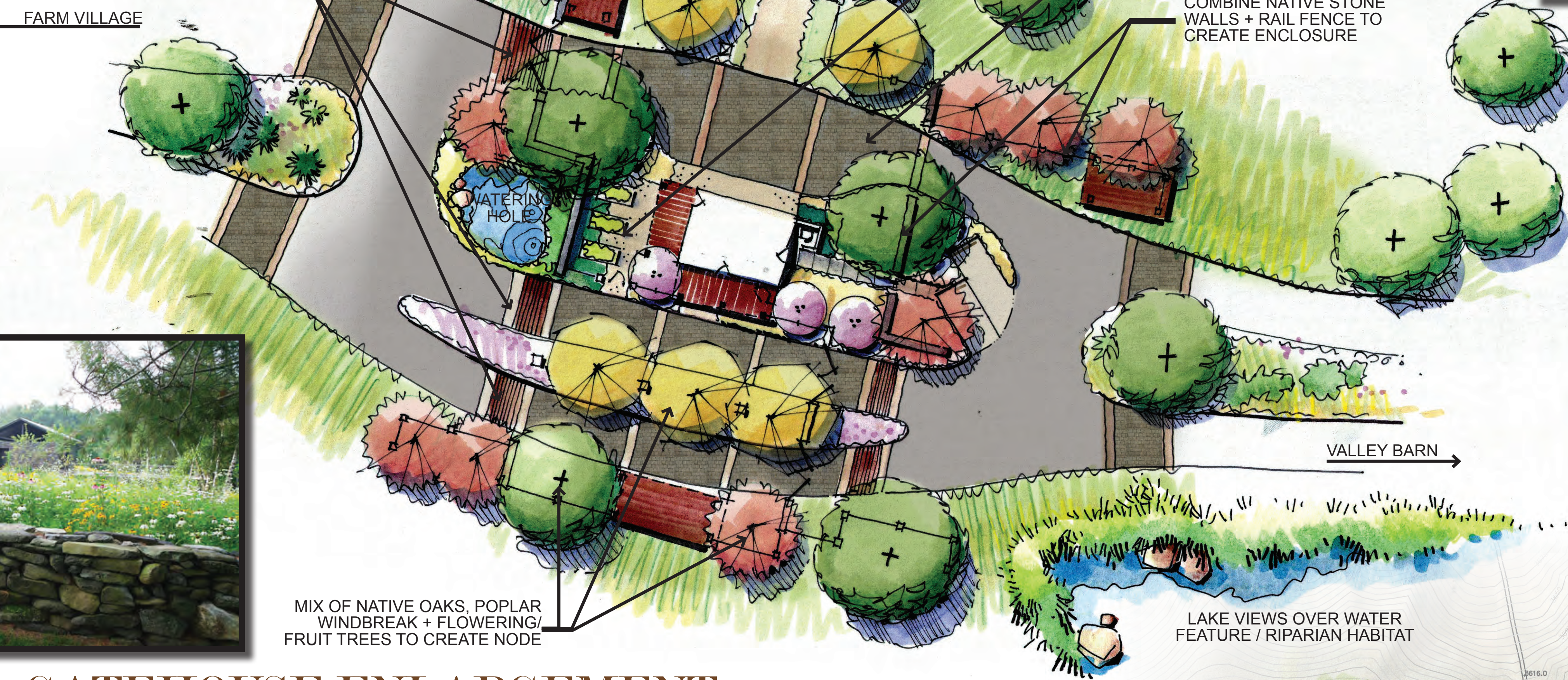


**TEJON RANCH**  
 COMPANY  
*Building the Legacy*

COLLABORATIVE V  
 DESIGN STUDIO INC.  
 7118 EAST 1ST AVE.,  
 SUITE 101  
 SCOTTSDALE, ARIZONA 85251  
 OFFICE: 480.347.0590  
 FAX: 480.656.0011

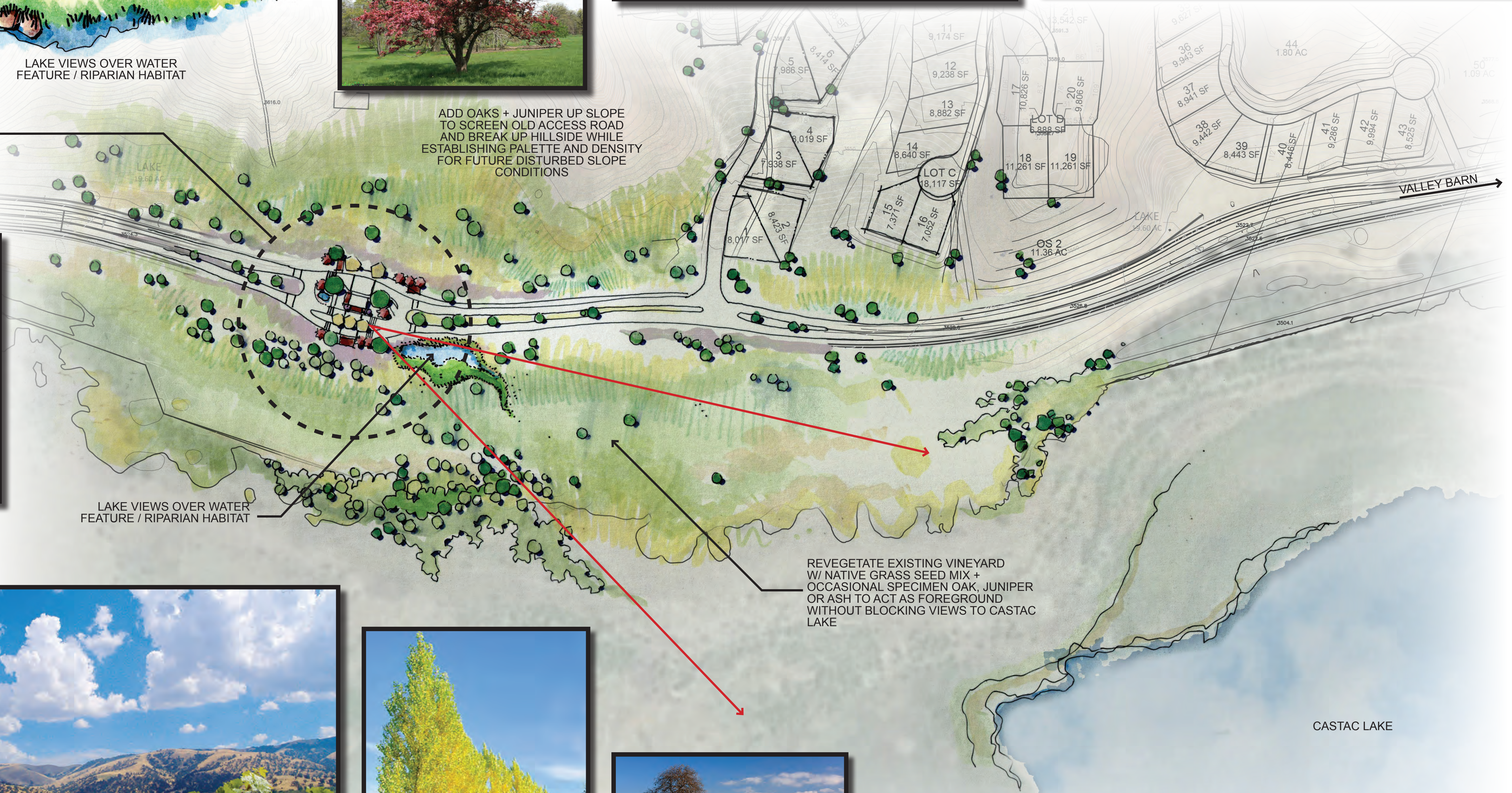
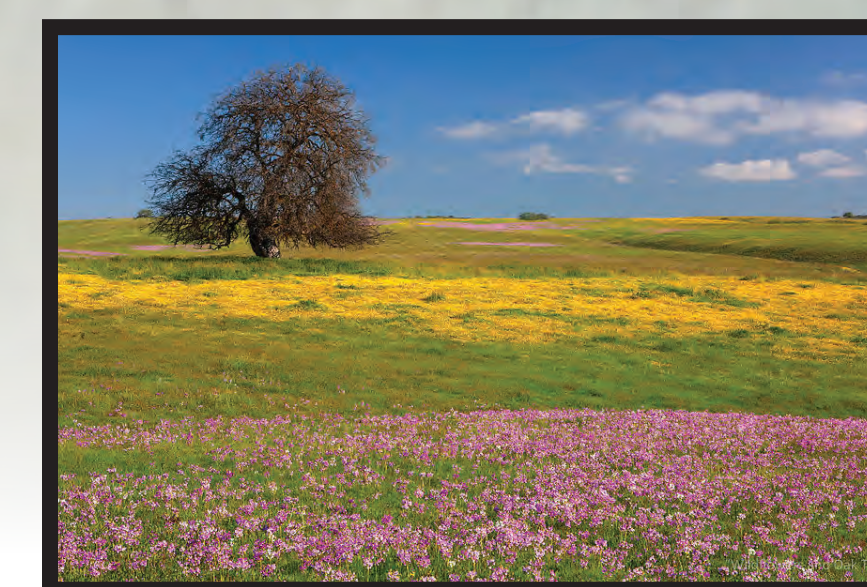
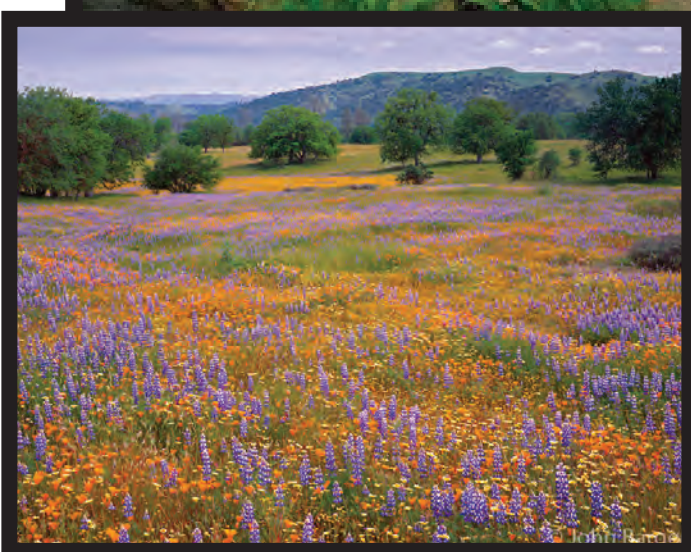
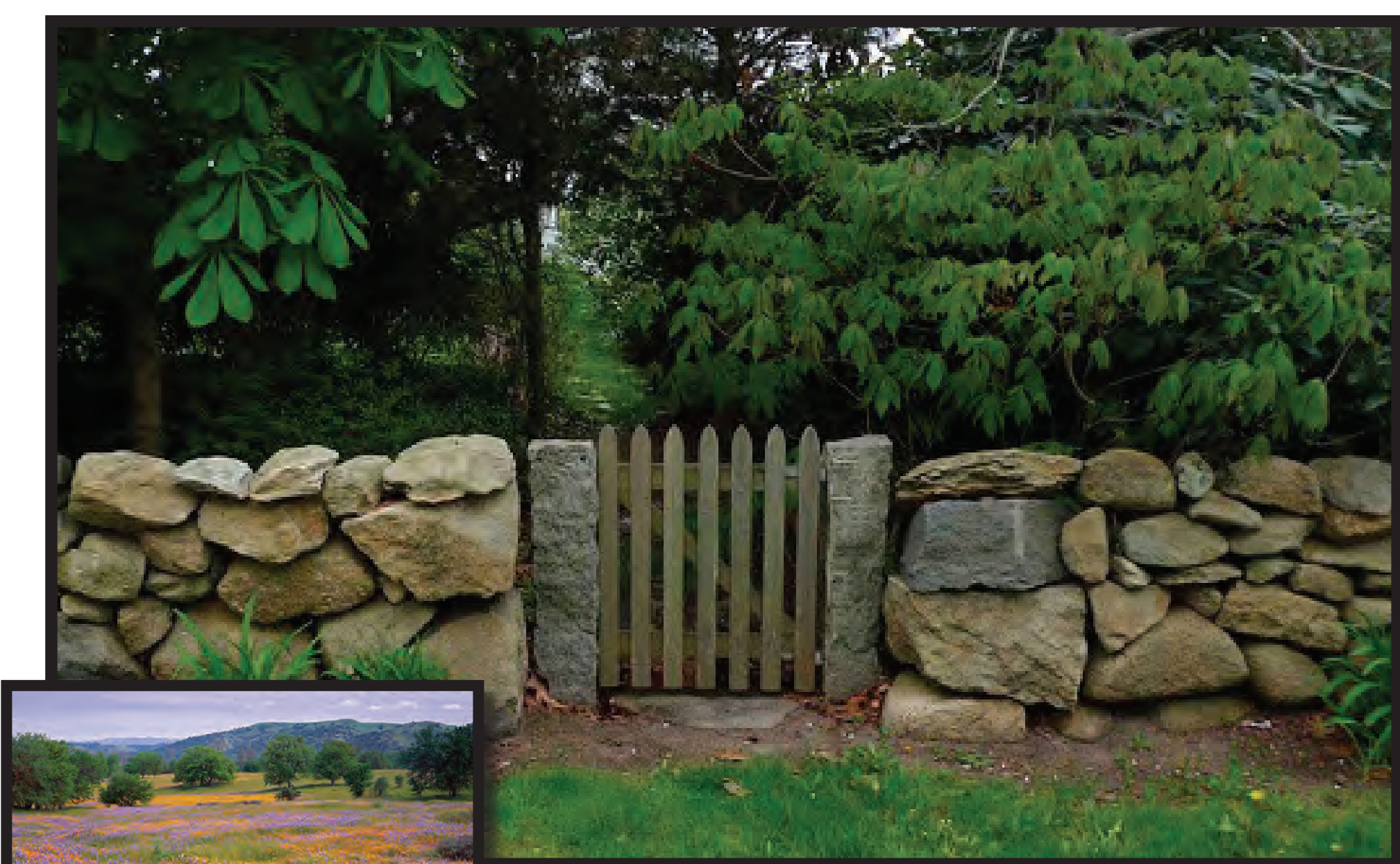


"CATTLE GUARD" AT GATES + BEGINNING OF ACCENT PAVING TREATMENT TO ACT AS TRAFFIC CALMING



### GATEHOUSE ENLARGEMENT

SCALE: 1"=20'-0"



### GATEHOUSE CONCEPT

*Mountain Village*  
at TEJON RANCH

### ENTRY DRIVE AT GATEHOUSE



SCALE: 1"=100'

0' 100' 200'

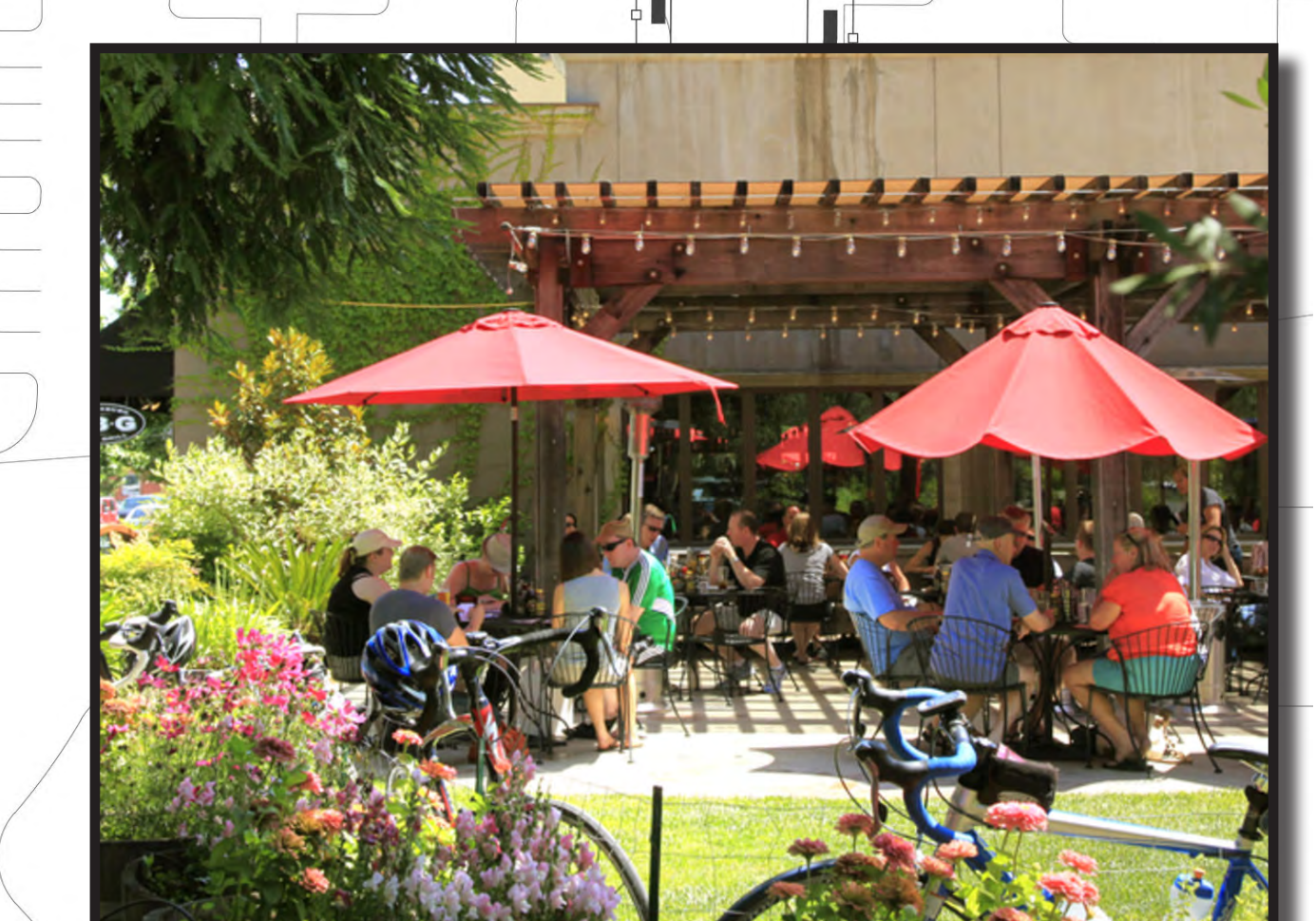
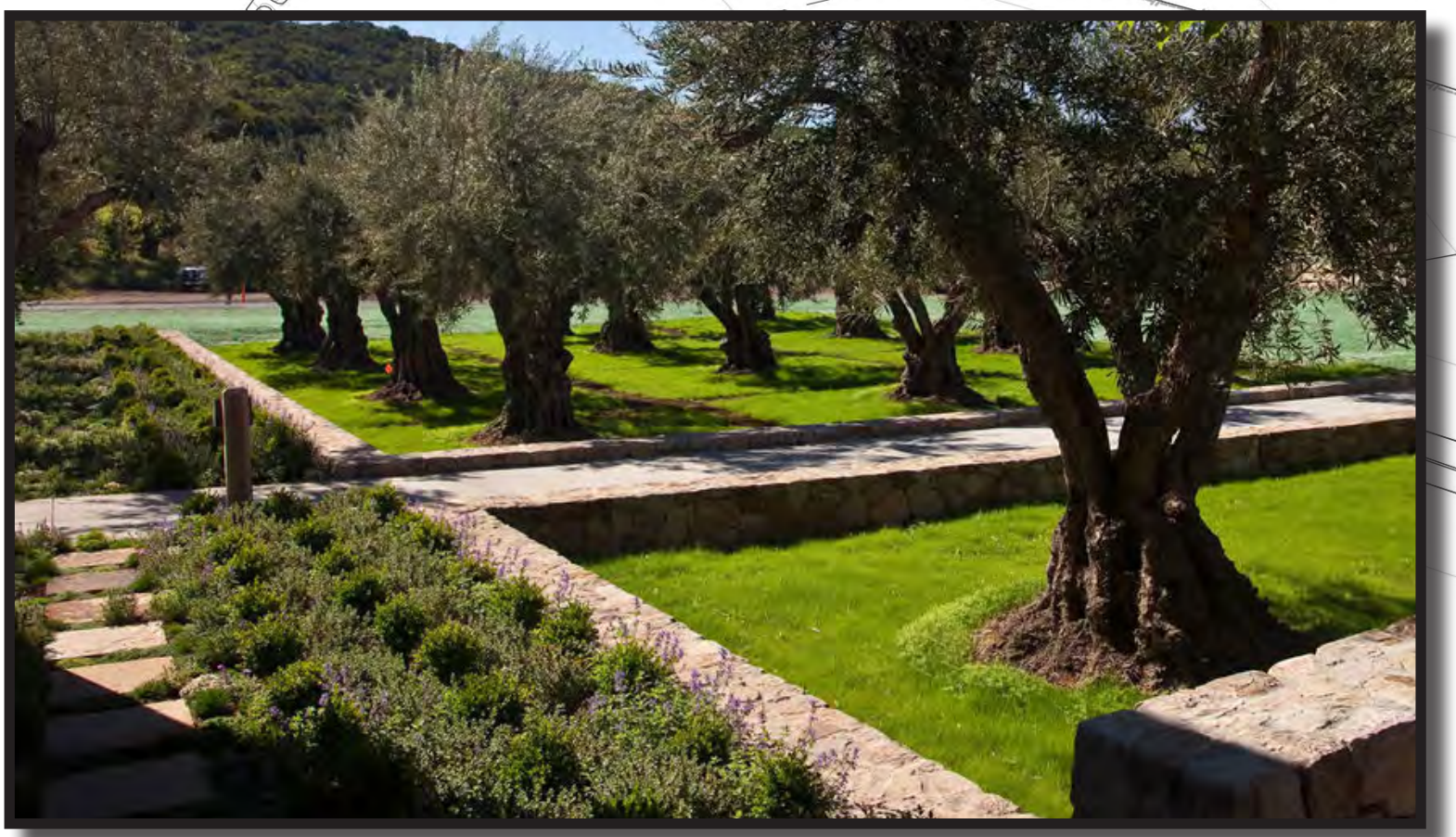
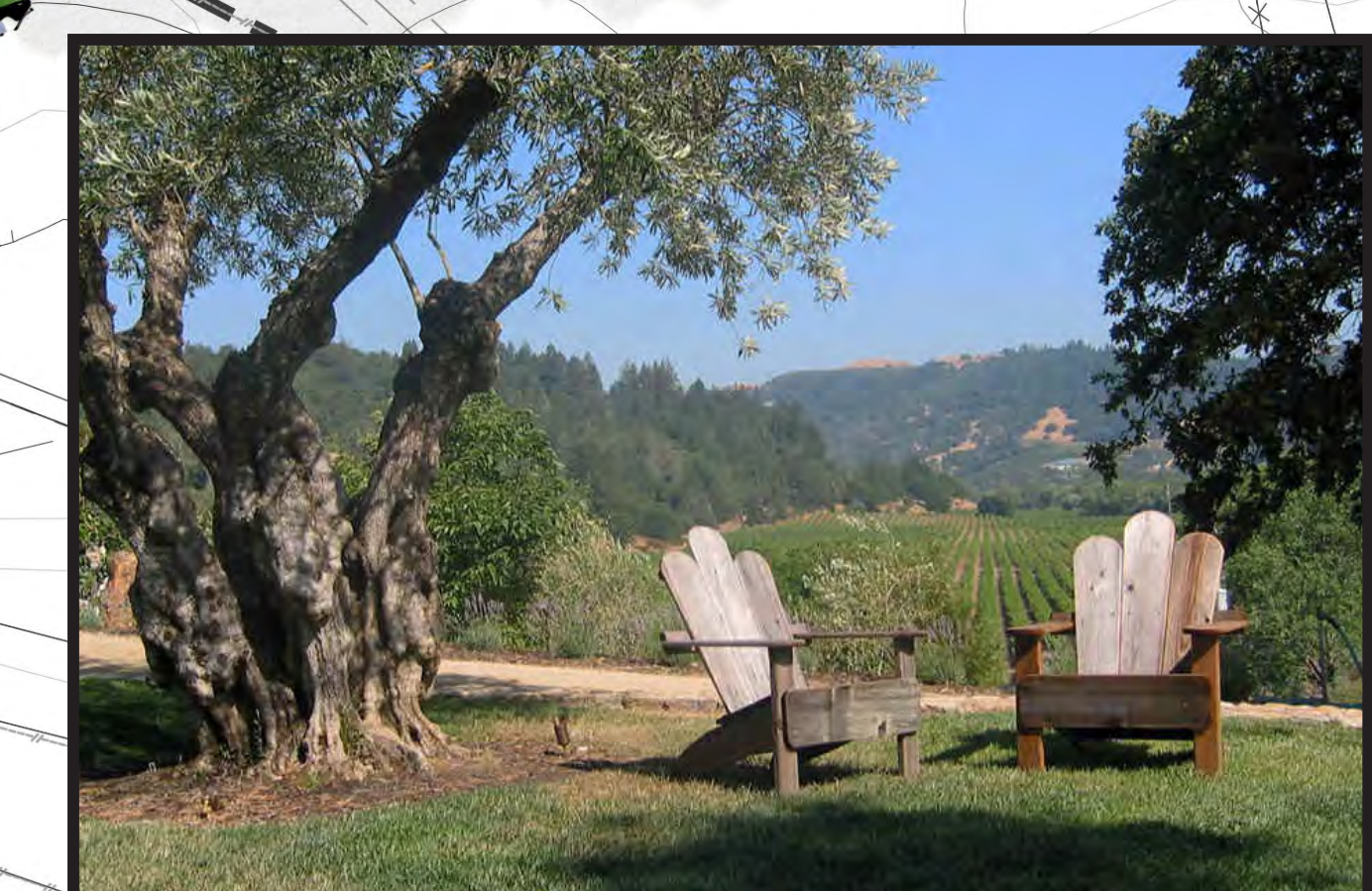
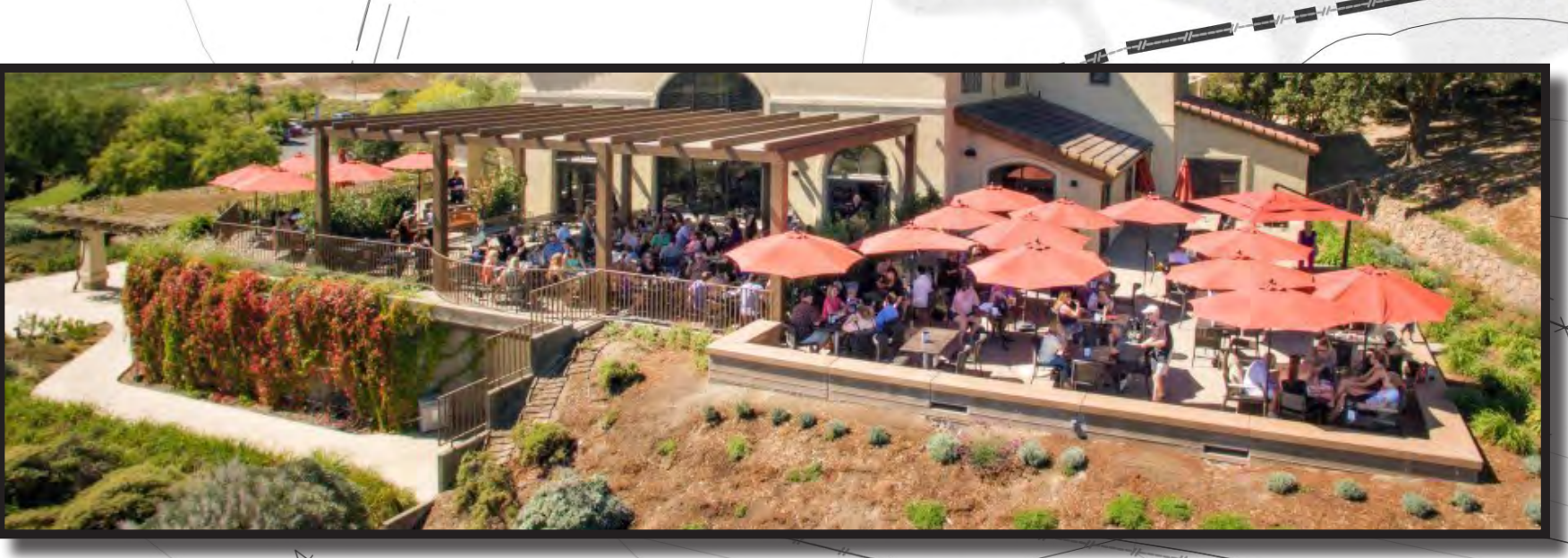
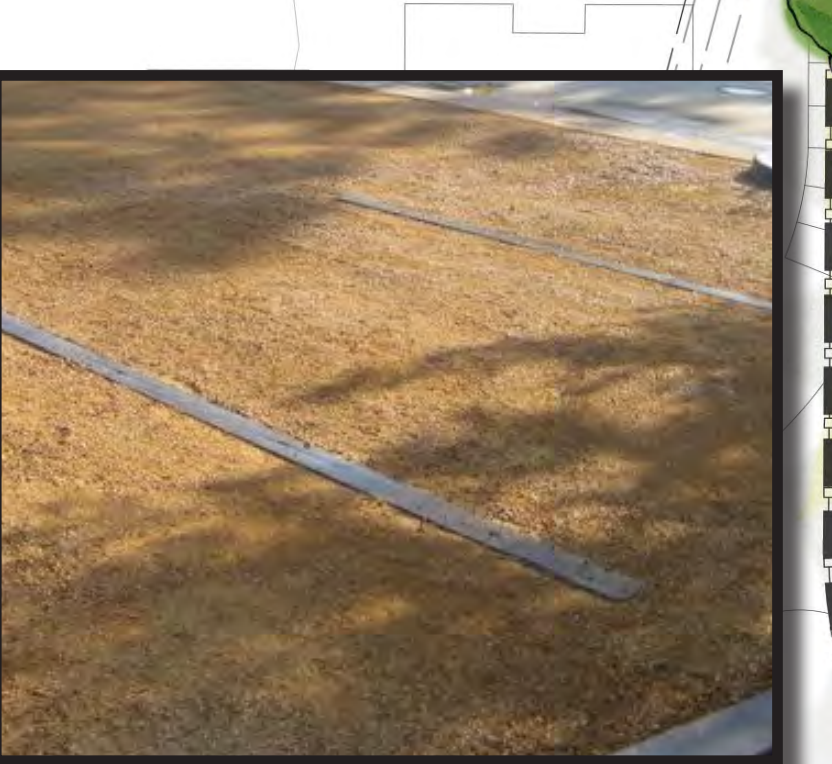
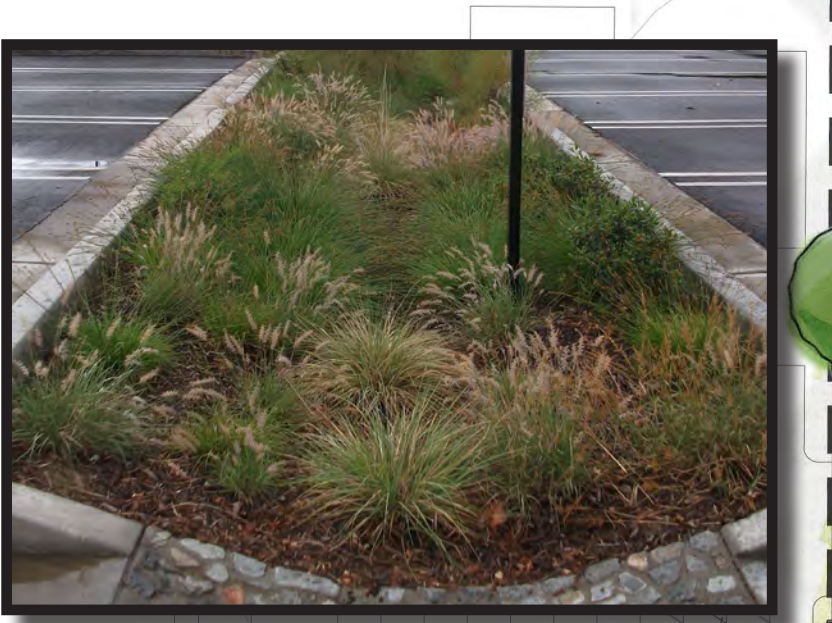
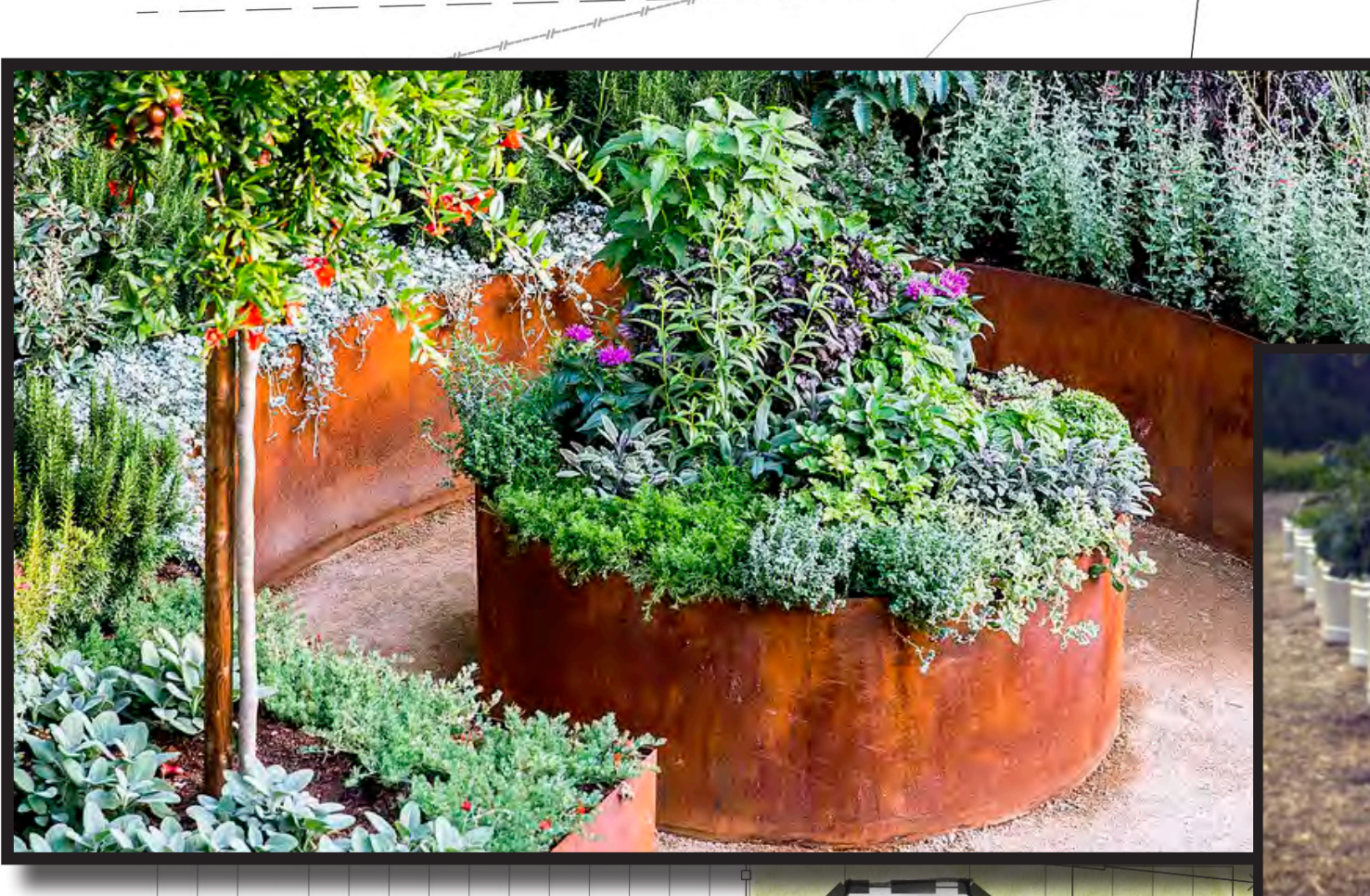
PREPARED APRIL 19, 2018

**TEJON RANCH**  
COMPANY

*Building the Legacy*

COLLABORATIVE V  
DESIGN STUDIO INC.  
7118 EAST 1ST AVE.  
SUITE 101  
SCOTTSDALE, ARIZONA 85251  
OFFICE: 480.347.0590  
FAX: 480.656.0011





**FARM VILLAGE SITE PLAN**

*Mountain Village*  
at **TEJON RANCH**

SCALE: 1"=40'  
0' 40' 80'  
PREPARED APRIL 19, 2018

**TEJON RANCH**  
COMPANY  
*Building the Legacy*

COLLABORATIVE V  
DESIGN STUDIO INC.  
7114 EAST 1ST AVE.  
SUITE 102  
SCOTTSDALE, ARIZONA  
85251  
OFFICE: 480.347.0592  
FAX: 480.356.0511



**Gatehouse - South Elevation**



Valley Barn - East Elevation